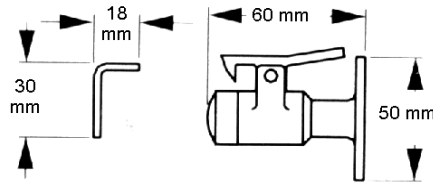




Izerwaren  
Order  
numbers

**HOOK TYPE DOOR HOLDERS WITH POSITIVE LATCHING**

31.710 **Hook model door holder**  
For medium to heavy doors;  
316 stainless steel  
Distance 60 mm / 2 3/8".  
With spring loaded catch



#31.710: Hook door holder spring loaded; Distance 60 mm or 2 3/8" STAINLESS STEEL

31.712 **Hook model door holder**  
For medium to heavy doors;  
316 stainless steel  
Distance 86 mm / 3 3/8".  
With spring loaded catch



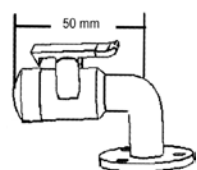
#31.712: Hook door holder spring loaded; Distance 86 mm or 3 3/8" STAINLESS STEEL

31.713 **Hook model door holder**  
For medium to heavy doors;  
316 stainless steel  
Distance 102 mm / 4 inch.  
With spring loaded catch



#31.713: Hook door holder spring loaded; Distance 102 mm or 4" STAINLESS STEEL

31.714 **Hook model door holder**  
For medium to heavy doors;  
316 stainless steel  
90 degree Angle distance 50 mm / 2".  
With spring loaded catch

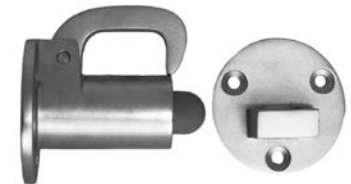
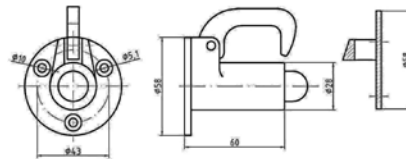


#31.714: As above; 90 degree angle; distance 50 mm C to C or 2" STAINLESS STEEL  
Spring loaded

31.236 **Hook model door holder (236)**  
For medium to heavy doors;  
Distance 65 mm ~ 2 1/2"  
Chrome Plated Brass

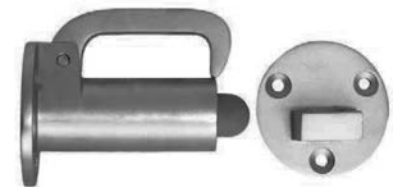
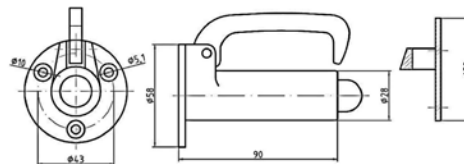


#31.236 Door holder with hook



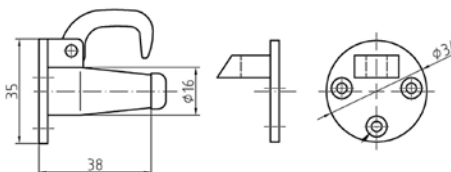
#31.236: Hook Door holder, Back to back side plates: Distance 65mm or 2 1/2"

31.36A **Hook model door holder (236A)**  
For medium to heavy doors;  
Stainless steel  
Distance 95 mm ~ 3 3/4"  
Chrome Plated Brass



#31.36A: Hook Door holder; Back to back side plates: Distance 95 mm ~ 3 3/4";

31.513 **Hook model door holder (2513)**  
For light doors  
Distance 42 mm ~ 1 5/8"  
Chrome Plated Brass



#31.513: Hook door holder; Distance 42 mm / 1 5/8" Chrome Plated Brass



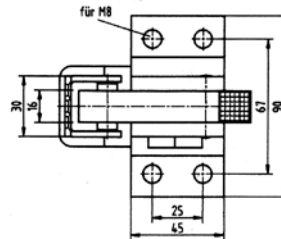
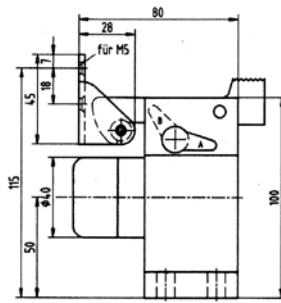
- Special Door Holders
- Rattle free and sea-water resistant

**Door holder with hook #32.010**

For heavy doors: 220 lbs  
 Center buffer distance floor: 50 mm / 2"  
 4 1/2" high x 3 1/8" long x 3 1/2" wide  
 Available in anodized aluminum and **STAINLESS STEEL**

Bracket, piston and spring stainless steel

- floor mounted
- spring loaded
- with toggle for locking / non locking



#32.010 Spring loaded hook type door holder. Locking in open position

**FINISH: ALUMINUM OR STAINLESS STEEL SEAWATER RESISTANT.**

32.1610 bottom raising plate 20 mm  
Finish: Aluminum / black only.



32.010N



32.010K

#32.010N Cam without lock in open position

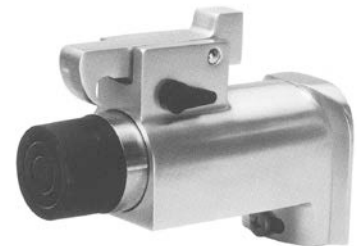
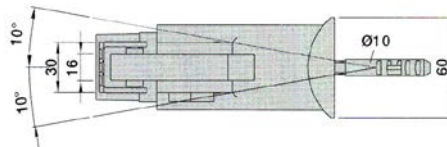
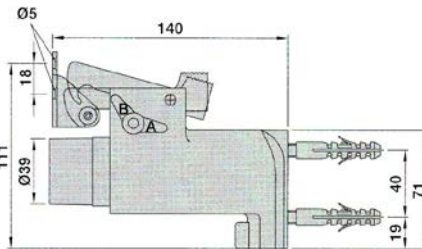
#32.010K Cam with Key Lock allowing for dead locking in open and in closed position

#32.1610 bottom raising plate 20 mm

**Door holder with hook #32.096**

For heavy doors: 220 lbs  
 Distance from wall: 140 mm / 5 1/2"  
 3 3/4" high x 5 1/2" long x 2 3/8" wide  
 Heavy anodized aluminum; bracket, piston and spring: stainless steel

- wall mounted
- spring loaded
- with toggle for locking / non locking
- swivels 10 degrees to either side



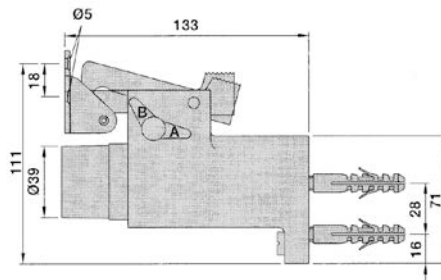
#32.096 Spring loaded hook type door holder with 10 degree swivel. Lock in open position.

**FINISH: ALUMINUM - SEAWATER RESISTANT**

**Door holder with hook #32.1012**

For heavy doors: 220 lbs  
 Distance from wall: 140 mm / 5 1/2"  
 3 3/4" high x 5 1/2" long x 2 3/8" wide  
 Heavy anodized aluminum; bracket, piston and spring: stainless steel

- wall mounted
- spring loaded
- with toggle for locking / non locking
- rigid wall mounted

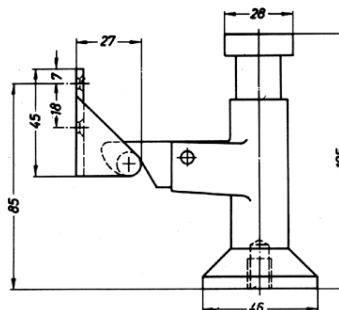


#32.1012 Spring loaded hook type door holder. Rigid wall mounted.

Cam lock in open position.  
**FINISH: ALUMINUM SILVER**

**Push Model Door holder #32.047**

Medium duty, for doors up to 50 kg.  
 Floor mounted.  
 4 1/8" High x 2 3/4" Wide  
 Available in aluminum  
 Foot operated; Can be used exterior.  
 Seawater resistant.



#32.047 Push Type Door holder  
Floor mounted distance floor to hook:  
**FINISH: ALUMINUM SILVER**